

This Week at Second Chance...



“A public safety program of the Kansas City Metropolitan Crime Commission”

www.kc-crime.org

Second Chance Mission: “To provide a crime prevention strategy for Metropolitan Kansas City through research, advocacy and the funding of programs that improves opportunities for ex-offenders to lead productive lives.”

March 8, 2010

Volume 2, Issue 3

The Second Chance Program focuses on metro-wide reentry efforts through Research and special projects, Advocacy through the Reentry Coalition, and Fundraising to support local organizations providing direct services to the offender population.

In an effort to keep you more informed on what's happening in the Second Chance community, we will send out this e-newsletter periodically with the latest and greatest news and information!

Thanks for your support of the Second

[Have you missed an issue of this newsletter? Go to our website for the archived copies: www.kc-crime.org](http://www.kc-crime.org)

JUDGES, ATTORNEYS, PROBATION OFFICERS ATTEND EVIDENCE-BASED SENTENCING TRAINING FEATURING NATIONAL EXPERT

JEFFERSON CITY, Mo. – Approximately 100 judges, prosecutors, public defenders, probation and parole officers, and other court staff from around the state gathered Friday, Feb. 26 to learn more about evidence-based sentencing practices to improve public safety and reduce recidivism.

The conference, hosted by the Missouri Sentencing Advisory Commission and held at the Country Club Hotel & Spa in Lake Ozark, was led by J. Scott Johnston, Chief Probation Supervisor of the Missouri Board of Probation and Parole, and Roger K. Warren, President Emeritus of the National Center for State Courts and author of several works about evidence-based

Chance Program!

Coming Soon

**Kansas City
Metropolitan
Reentry Coalition,**
Tuesday, March
30th, 3-4PM
(networking before
and after meeting)
Pioneer Campus of
MCC, 2700 E. 18th St,
K.C. Mo.,
Auditorium

Landlord Forums:
Kansas April 20,
2010 6:00-7:30PM
Donnelly College,
KCKS
Hosted by Carol
Marinovich

Missouri May 11th,
2010 6:00-7:30PM
Community
Christian Church,
KCMO Hosted by
Alvin Brooks

**Employment
Symposium:**
April 27th
8:00-9:30AM
Pioneer
Auditorium

sentencing.

“Most of our current sentencing laws were first enacted 30 years ago, at a time when violent crime was on the rise and people were fed up,” said Warren, who previously served 20 years as a trial judge in Sacramento, Calif. “For a time, research seemed to support the idea that nothing but prison works to reduce recidivism. This turned out to be wrong but became a self-fulfilling prophecy nonetheless as resources available for probation and parole services dried up.”

Johnston continued, “There truly was an aura of uncertainty when I first started in probation and parole more than 25 years ago. We thought we knew what worked best, but ultimately research showed us some of our practices and programs were not effective.”

For example, Warren explained, “By putting low-risk nonviolent offenders into prison with high-risk offenders, we’re actually doing harm. We make them worse and increase their risk of recidivism. It is unwise to take them away from the things that make them low-risk: their supports from things such as family, church, jobs and school.”

Evidence-based sentencing aims to assess individual offenders based on corrections principles that are used to reduce recidivism and that statistically are supported by rigorous evaluation against control groups, multiple studies and systematic review. In Missouri, evidence-based sentencing is rooted in nearly 30 years of data from the Department of Corrections and Division of Probation and Parole. Ultimately, the research underlying evidence-based sentencing helps identify which offenders are at the greatest risk of reoffending, what characteristics lead the offender to commit crimes, and what treatment or correctional services work to reduce the risk of recidivism.

“This is not an either-or proposition,” Warren explained. “In sentencing someone in the community, we can both punish appropriately and do what we can to minimize the risk of reoffending.”

Second Chance Offices

3100 Broadway, Suite
226

Kansas City, Mo 64111

816-960-6800

Pioneer Campus Office

2700 E. 18th St, Rm
207

Kansas City, Mo.
64127

816-285-8668

Contact Us

Lora McDonald, Program Director,
816-277-5912,
lmcdonald@kc-
crime.org

Barry Mayer, Vice-
President,
KCMCC, 816-960-
6814, bmayer@kc-
crime.org

Richard Easley,
President, KCMCC,
816-960-6800,
reasley@kc-
crime.org

Warren warned against perceiving evidence-based sentencing tools as dictating what sentence is appropriate for a particular offender.

“These tools are not intended to determine the level of punishment,” he said. “They are not designed to determine which offenders should be kept in the community and which should be sent to prison. Instead, they are designed to help change the behavior of offenders who are determined appropriate to keep in the community.

“Evidence-based sentencing tools are designed to inform professional judgment,” Warren continued. “They do not prohibit a judge from deciding how the data apply – or may not apply – to a particular offender. ... These tools are most effective when used dynamically, not just for one point in time. Ideally, they should be used to reassess an offender when something – job, family situation, etc. – changes in that offender’s life.”

During the conference, participants also got an opportunity to discuss sentencing and probation practices throughout the state, model programs used in other parts of the United States, system-wide challenges in implementing evidence-based sentencing and actions that can be taken to address those challenges.

“There is really no argument about the research now,” Johnston said. “We do know what works, and we do know what does not work. The challenge is in ensuring quality control as we implement evidence-based sentencing practices, especially for nonviolent offenders, across Missouri with limited resources.”

Friday’s program is part of a national judicial education curriculum about evidence-based sentencing that Warren helped the National Center design and that he is conducting for judges and criminal justice agencies throughout the United States.

This article was provided by the Missouri Sentencing Commission and can be viewed at www.mo.gov

**SECOND CHANCE
PROGRAM**

Board of Directors

CHAIRMAN OF THE
BOARD

William H. Dunn, Sr.

VICE CHAIRMAN

Carl DiCapo

SECRETARY

Albert Riederer

BOARD OF DIRECTORS

Richard Anderson
Charles Battey
Alvin Brooks
Terry Calaway
Bill Dana, Jr.
Peter Dunn
Elena Franco
Fernando J. Gaitan, Jr.
Kenneth Gibson
Ellen Hanson
Wallace Hartsfield
Robert Lee Hill
Ernie Johnson
Cathy Jolly
James Kanatzar
Chi King
John Modest Miles
C. Eugene Morgan
Julie Porter
Cliff Sargeon
Marilyn Scafe
Willard Snyder
Kent Sunderland
Bailus Tate
Marlene Weatherford

Defendant/Offender Workforce Development Conference Selects J.E. Dunn Construction for National Award

www.dowdconference.org

Our Federal Partners of the DOWD Awards committee would like to congratulate J.E. Dunn, under the leadership of chairman emeritus William H. Dunn, Sr., on being selected as a recipient of the following award:

OUTSTANDING BUSINESS PARTNERSHIP OF THE YEAR (NATIONAL) - JE Dunn (*Kansas City, MO*)

JE Dunn Construction is the nation's largest builder of prisons and the nation's tenth largest general contracting firm. JE Dunn Construction has placed a commitment on assisting prisoner reentry programming and workforce development. The company has employed individuals with criminal backgrounds as well as donating ten percent of the company's pre-tax earnings towards charitable contributions including reentry programming with Salvation Army, Catholic Charities and others. In 2008, Mr. Dunn provided a \$300,000 contribution at the launching of the Crime Commission's Second Chance Program in Kansas City, which serves metropolitan Kansas City, Missouri and Kansas. Furthermore, he brought leaders of business and elected officials with him to join the board of this initiative. His belief extends further onto JE Dunn staff who donated over \$780,000 to charities in 2008.

Introducing the Second Chance Center

One clear need that has emerged from the year of research in the community is a targeted response to reentering offenders in Missouri who are considered "high risk" for recidivism. Modeled after other successful programs and growing evidence in the field of corrections, the **Second Chance Risk Reduction Resource**

Center would work with offenders deemed most likely to return to incarceration, as identified by a new classification system from Missouri Department of Corrections.

Located in Kansas City, Missouri, the Second Chance Risk Reduction Center would accept referrals from Missouri Department of Corrections Probation and Parole staff in the metro as well as a small number of referrals from U.S. Courts System. Center staff will be specialists in areas such as Substance Abuse Recovery, Employment, Family Reintegration, Cognitive Development, and Community Resources. Staff will work one on one with a selected number of offenders and offer group sessions within their area of expertise to all center participants. Community resources will be co-located at the center to maximize the likelihood of success of participants.

Currently, the rate of recidivism for offenders under supervision of Missouri Department of Corrections is 54% returning to prison within three years. Some local Missouri sub-populations, those classified as “High Risk”, return at an even more alarming rate of 83% within three years. By targeting those most likely to create new victims through their crimes, and using research driven practices, the Crime Commission endeavors to further reduce the recidivism rate which in turn will reduce the number of new crime victims and lessen the tax payer burden from the costs associated with incarceration.

If your organization is interested in a partnership to serve high risk offenders at the Second Chance Center, please contact Lora McDonald, Second Chance Program Director. Second Chance Center will be launched when funding has been secured at the federal, state and/ or local level.

Meet our KC Metropolitan Reentry Coalition Member:

FIRST Call NCADD Alcohol/Drug Prevention & Recovery

It is the mission of **FIRST Call, NCADD Alcohol/Drug Prevention & Recovery** to reduce the impact of alcohol, drugs and other addictions by providing quality services to individuals, families and the community. **FIRST Call, NCADD Alcohol/Drug Prevention & Recovery** of Greater Kansas City is an agency that provides clinical, educational and prevention services to individuals and families who have been affected by alcohol or drug addiction. The agency, which operates a 24-hour, seven days a week crisis hotline, advocates prevention, intervention and treatment in the Greater Kansas City area, as well as training for professionals. **FIRST Call** is America's oldest national advocacy health organization dealing exclusively with alcoholism and drug dependence.

FIRST Call works directly with offenders, former offenders and their families. They have programs in the Jackson County Jail and in the community. Program Director Preston Washington learned about the Kansas City Metropolitan Reentry Coalition from a Missouri Probation/ Parole Officer. **First Call** brings over 40 years of experience in recovery, training and support for offenders and the broad population to the Reentry Coalition.

First Call Programs include the following:

M.E. First—Motivational Enhancement for those who choose recovery over alcoholism and substance abuse

RAP: Referral Assistance Program provides confidential one-on-one evaluations by certified alcohol/drug counselors.

How To Cope—a seven-session course developed for adult family

members or friends of someone who is abusing alcohol and/or other drugs.

CAN - Considering Adolescent Needs (CAN)—a seven-session educational support course designed for young people, ages 13-17, who are living with an adult who abuses alcohol or other drugs.

CARE - Children At-Risk Encounter (CARE)—a seven-session educational support course designed for children, ages 6-12, who live in chemically abusive environments.

To access these services, just make the *First Call* – no one is turned away.

First Call contact information:

633 E 63rd St.

Kansas City, MO 64110

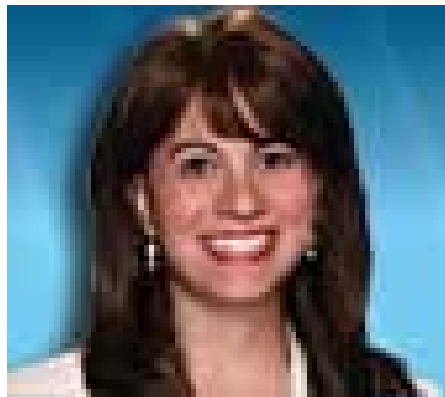
816-361-5900

816-361-7290 (Fax)

www.firstcallkc.org

First Call welcomes donations and community volunteers. Please check our website or call 816-361-5900 ask for Michelle Irwin.

Meet our Second Chance Advisory Board



Cathy Jolly, Member of the Board

Cathy Jolly currently serves as City Councilwoman to the City Council of Kansas City, Missouri – 6th District, At-Large. She is Chair of the Public Safety and Neighborhoods Committee. Councilwoman Jolly sits on numerous boards including Truman Medical Center and the Health Commission which she co-chairs.

Among Mrs. Jolly's many honors, she has received the Missouri Police Chiefs' Association Legislative Appreciation Award, Kansas City's Legal Leaders Award, as well as recognition by Cornerstones of Care as an "Outstanding Family Advocate".

She is the past State Representative for the 45th District in the Missouri General Assembly. Mrs. Jolly served as a Deputy Majority Whip, as president of the Women Legislators of Missouri, and as the ranking member of the Crime Prevention and Public Safety Committee. She is a past gubernatorial appointee to the State Council for Interstate Adult Offender Supervision. Before being elected, Mrs. Jolly served as an Assistant Prosecuting Attorney for the Jackson County Prosecutor's Office. She was Coordinator for the Drug Abatement Response Team (DART).

Mrs. Jolly's public safety background, along with her current public safety related activities, provide a direct correlation with Second Chance and facilitated her interest in participating on the Board. She has seen first-hand how offenders need assistance reentering the community after serving their time. If given a fair chance and needed resources, they can be successful and contribute to society. Councilwoman Jolly is an active board member, most recently sponsoring a resolution to support the development of the Second Chance Center for "high risk" offenders.

Mrs. Jolly received a Bachelor of Arts degree in political science from the University of Missouri-Columbia and graduated with distinction from the University of Missouri-Kansas City with a Juris Doctorate Degree and is a licensed attorney in Missouri and Kansas. She is married to Scott Taylor and has a six-year-old son.